

theGuard! NetworkManager – the powerful software solution for visualization, monitoring and management of heterogeneous networks.

theGuard! NetworkManager



Maximum Efficiency for All Your Network Management Tasks

To ensure your network delivers the high standards of availability you demand, you have to keep track of all components – 24 hours a day, every day. You need a solution that detects and displays all your network devices, connections and services. And it has to be able to pinpoint and resolve bottlenecks and other potential problems, before they become major headaches.

theGuard! NetworkManager does all this and more. This cutting-edge software tool recognizes all your network devices and their connections, depicts them in real time, and monitors the availability and performance of network services. With its unrivalled user-friendliness and efficiency, theGuard! NetworkManager is the ideal solution for managing multi-vendor networks.

Discovery and topology of the entire network in its physical, logical and VLAN structure.

One User Interface for All Components and Vendors

Time is money: To perform their day-to-day activities quickly and cost-effectively, your administrators need a bird's-eye view of the entire network – no easy task when each component has its own vendor- and device-specific attributes.

theGuard! NetworkManager is the only software solution capable of detecting all network devices – from all vendors. Devices and their attributes are depicted via a single, user-friendly graphical overview.

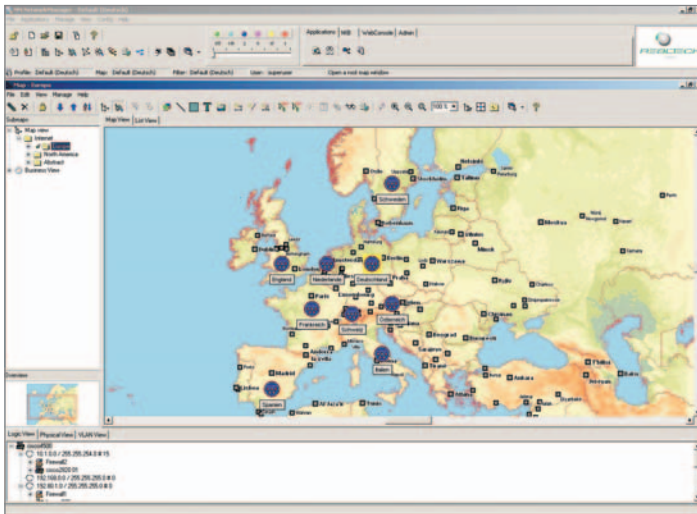
This is made possible by over 300 integrated, product-specific modules (PSMs) developed by REALTECH, and regularly updated and enhanced. A list of all currently available PSMs can be found at: www.realtech.com/psm.

Netflow Option

theGuard! NetworkManager's Netflow Option is a Web-based analysis software that delivers indispensable information on network traffic across entire enterprises. This includes detailed analyses on the communication relationships between network subscribers (nodes), which in turn can be grouped and analyzed per users, applications or given protocols.

With theGuard! NetworkManager Netflow, many typical questions are readily answered. Among them:

- Who is communicating with whom, how much, where, and about what exactly?
- Who uses WAN connections and how are they used and for what?
- Which application requires which percentage of bandwidth?
- Does unusual traffic data denote a worm or virus attack?



Proactive Monitoring: Safeguarding Your Network and Saving Costs

theGuard! NetworkManager monitors the availability and performance of all network devices (hubs, routers, switches, servers, and storage resources), and of all other SNMP-enabled, IP-based equipment. These components and their status are displayed in real time. What's more, you can analyze data to spot long-term trends and optimize the performance of your network.

And you can monitor network services based on protocols such as TCP, HTTP or FTP. theGuard! NetworkManager also features an integrated service-level analyzer. This enables you to define tailored service-level rules for network services, generating considerable potential for savings. If an error occurs, the integrated EventManager will respond by sending out immediate alerts with detailed information using the fastest means of communication. More than 120 preconfigured alerts and responses are available.

Visual Assisted Analysis

VAA – AutoMap

The newly developed VAA technology of the Guard! NetworkManager stands for Visual Assisted Analysis. This is a methodology that supports the informational capacity of the human eye in order to extract essential information from complex contexts.

The most basic level of an analysis based on the VAA technology is the mapping of the network topology. The physical connections that are found by the integrated topology are visualized using an AutoMap. The AutoMap will automatically place the nodes for the selected segment.

theGuard! NetworkManager



VAA – Routing & Switching

With the VAA – Routing & Switching module, different statuses are displayed to the user as color-coded status information on the individual paths. This includes the following information:

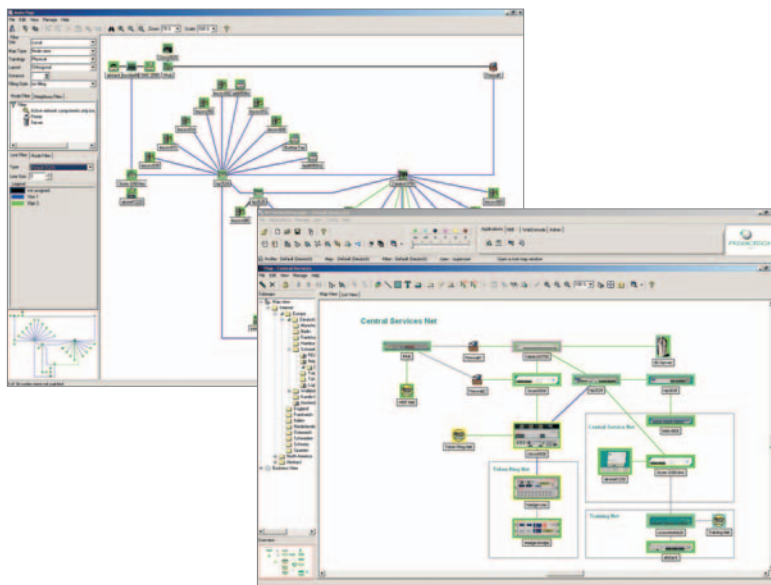
- Operation and administration status
- Forwarding status
- Speed, duplex status
- Utilization and error status (when threshold values are exceeded)

VAA – Virtual Networks

With the VAA – Virtual Networks module, VLAN-based statuses are displayed to the user as color-coded status information on the individual paths. This includes the following information:

- VLAN membership
- VLAN status
- MPLS status information

VAA: physical network topologies are displayed in an AutoMap with one click.



The most important functions at a glance:

- Reads out of configuration data from different vendors
- Compares it with previous configurations
- Logs and/or warns of changes
- Edits and saves configuration data
- Creates configuration macros
- Integrates into Node Manager, Map, PSM
- Scheduler-regulated
- Loads new firmware versions (software distribution)
- Telnet / SSH support

Voice over IP (VoIP)

There is a steady trend towards convergent networks in an increasing number of businesses and organizations. Voice over IP (VoIP) in particular has become the focus of current projects. The implementation and operation of VoIP, however, is hindered by heterogeneous and complex system and network landscapes.

theGuard! NetworkManager integrates VoIP management with network management, enabling businesses to centrally safeguard their voice communication in data technology. This is ensured by a three-level architecture:

Signal path analysis

SNMP is used to monitor the configuration of specific signal paths as well as the QoS in heterogeneous networks.

WAN analysis

Vendor-specific features (e.g. Cisco SAA or IP/SLA) use SNMP to deliver MOS and/or ICPIF values. Continuous measurements provide feedback on the quality of service.

Probe analysis

Probes (VoIP phones) are integrated into theGuard! NetworkManager by means of the PSM concept. Again, continuous measurements provide feedback on the quality of service.

Worldwide Confidence

REALTECH is Europe's largest supplier of system management software. For more than ten years, we have successfully developed and delivered innovative solutions for large and medium-sized businesses from a wide variety of industries.

Companies such as John Deere, Atos Origin, Merz Pharma, or EADS use theGuard! NetworkManager to secure the availability of their networks.

Provisioning / Device Configuration

It is hardly feasible to manually secure a clear overview of configuration details and software versions in complex system landscapes. Automated software distribution and release management are the solution to this problem. Software-supported administration, which logs changes to the network and system component, is therefore becoming increasingly important.

For this purpose, theGuard! NetworkManager includes a vendor-independent provisioning module that is capable of centrally managing the configuration of any CLI device.



Your Advantages at a Glance

- Vendor-independent network management
- Comprehensive SNMP component monitoring from a central console
- Discovery and topology of the entire network in its physical, logical, and VLAN structure
- Integrated reports on performance parameters and availabilities
- Flexible and vendor-independent provisioning module
- Intuitive accounting (Netflow)
- VAA visualization of all parameters with one click
- Automatically generated and normalized CMDB
- Signal path analysis (e.g. "quality of service" in the field of VoIP)
- Multi-site concept for the consolidation of distributed networks

For a better REAL·IT·y : REALTECH

REALTECH AG
Industriestrasse 39c · 69190 Walldorf · Germany
Phone +49.6227.837.651 · Fax +49.6227.837.9651
customer-services-itsm@realtech.com · www.realtech.com